

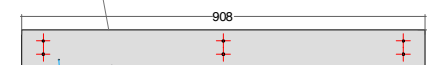
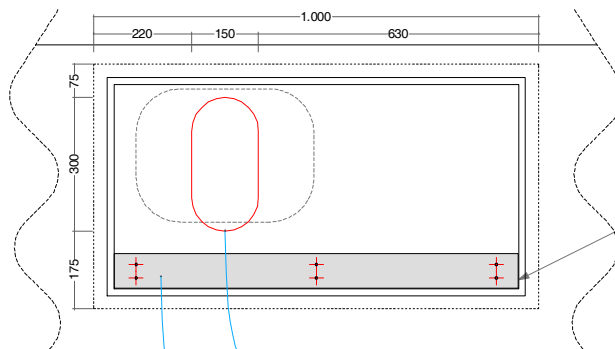
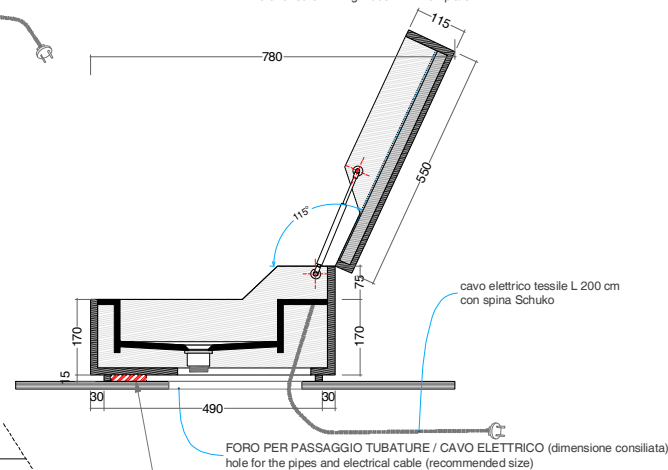
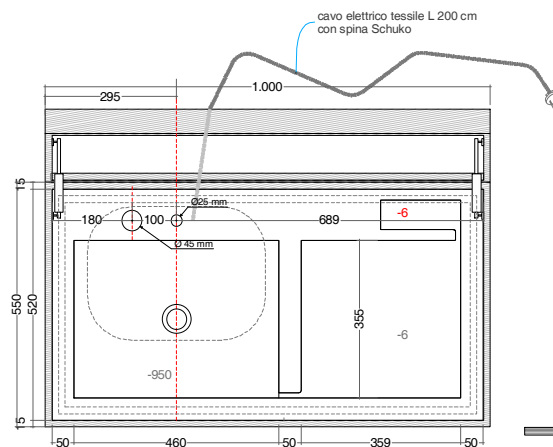
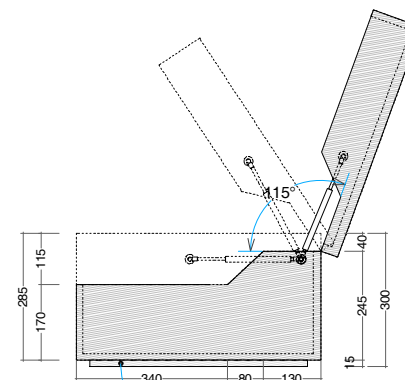
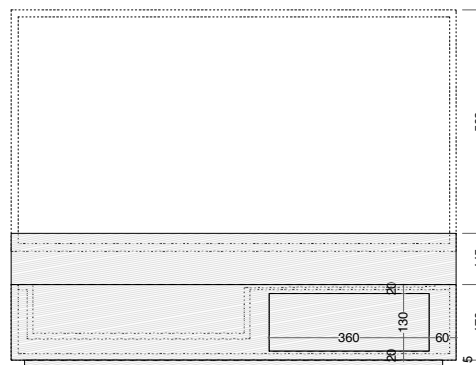
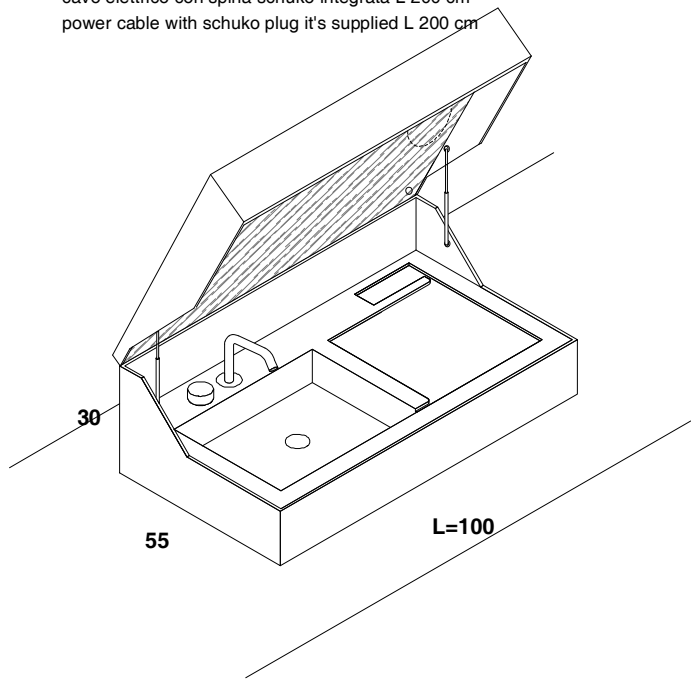
PESO NETTO / NET WEIGHT 47 Kg

Imballo / Packing: 20 Kg cassa di legno / wooden case

- 1 - eseguire foro per scarichi sul piano / mobile
 make the hole for the pipes and electrical cable
- 2 - fissare la dima di riferimento al piano / mobile
 fix the template to the plane / cabinet
- 3 - fissare il lavabo Hidden alla dima con le viti in dotazione
 (nello zoccolo del lavabo hidden sono già presenti 2 fori svasati per le viti)
 fix the washbasin Hidden to the template with the screws

- 4 - eseguire collegamenti idraulici / elettrici
 make connections water and electric

cavo elettrico con spina schuko integrata L 200 cm
 power cable with schuko plug it's supplied L 200 cm



FORO PER PASSAGGIO TUBATURE / CAVO ELETTRICO (dimensione consigliata)
 hole for the pipes and electrical cable (recommended size)

dima in pvc per fissaggio HIDDEN a piano
 pvc template for fixing washbasin Hidden to the console/ cabinet