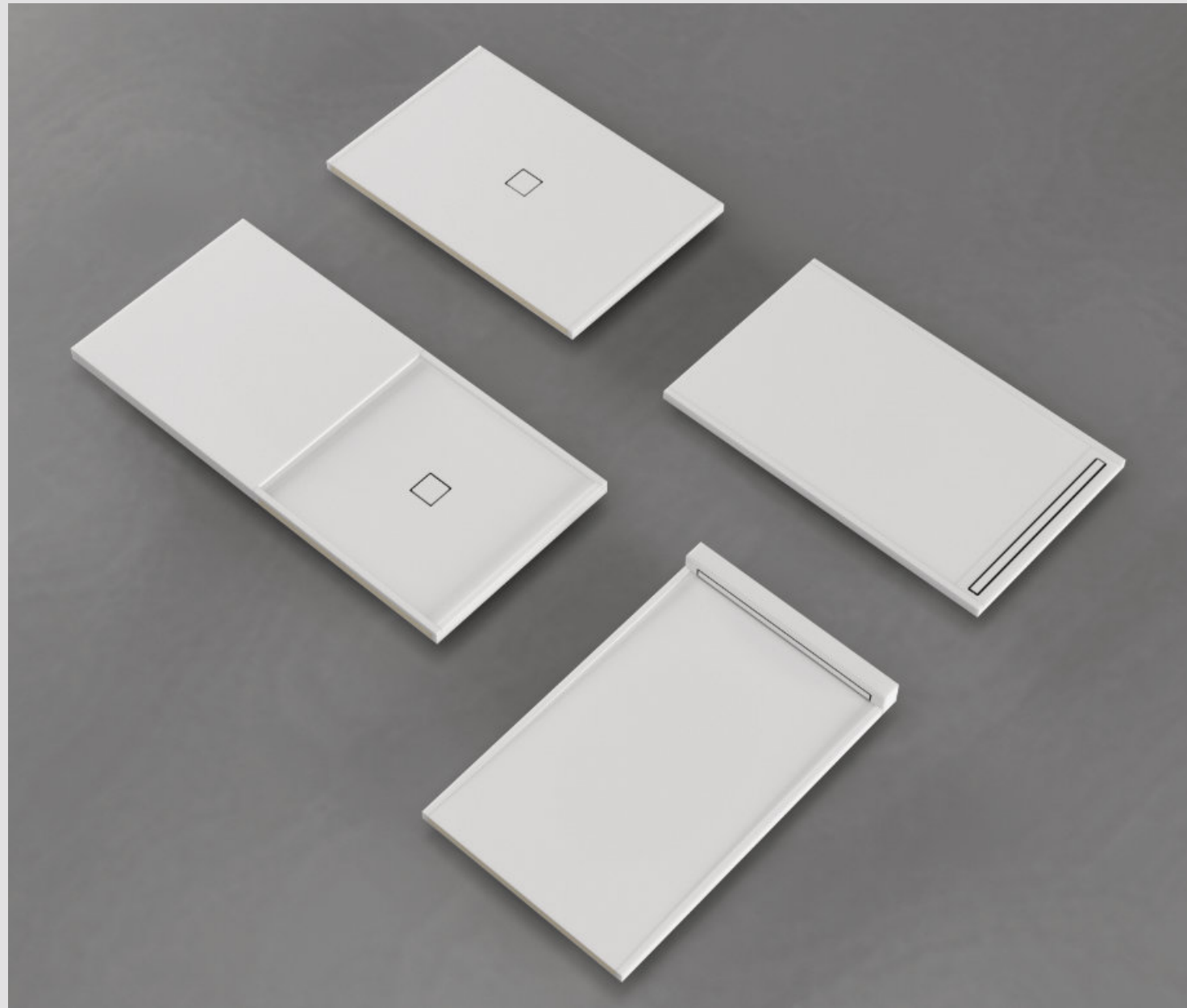


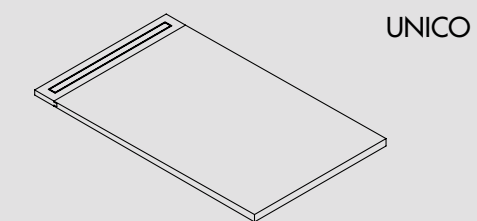
PIATTI DOCCIA / SHOWER TRAY



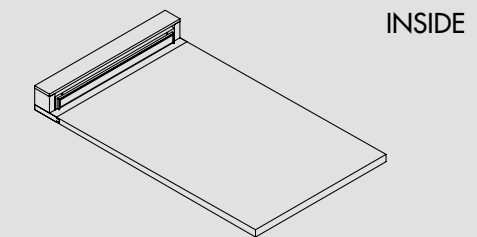
Nei piatti doccia in TechnoPVC trovano massimo risalto le principali caratteristiche dei prodotti / Elements: innovazione, soluzioni tecniche avanzate, progettualità, flessibilità produttiva, sicurezza idraulica e praticità di installazione. Il programma comprende piatti doccia con scarico lineare integrato Unico, con scarico centrale Basic Shower e il nuovo scarico lineare a parete Inside. Sono prodotti con dimensioni fino a 300x200 cm con pileta singola o doppia, in diverse soluzioni combinatorie e installabili sia a filo pavimento che in appoggio. Link è un modello di piatto in appoggio con scarico centrale e bacino integrato in un piano di contenimento.

The main characteristics of Elements products express at their best in the TechnoPVC shower trays: innovation, advanced technical solutions, design, production flexibility, water tightness and easy installation. The program includes the shower tray Unico with integrated linear drain, Basic Shower with central drain and the new Inside with linear drain on the wall. They are produced with dimensions up to 300x200 cm with single or double drain, in different combinations and they can be installed both floor flush and floorstanding. Link is a floorstanding model with central drain and basin integrated into a step.

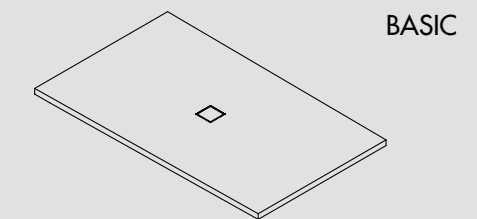
PIATTI DOCCIA / SHOWER TRAY



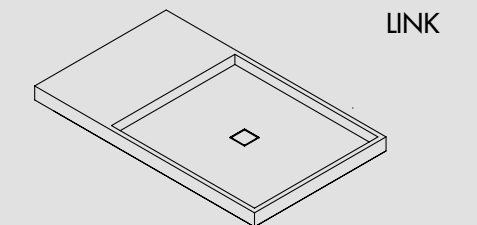
UNICO



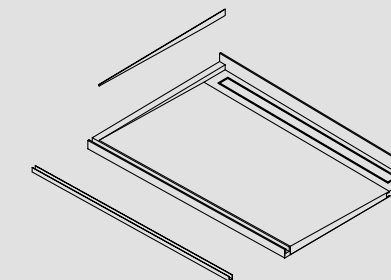
INSIDE



BASIC

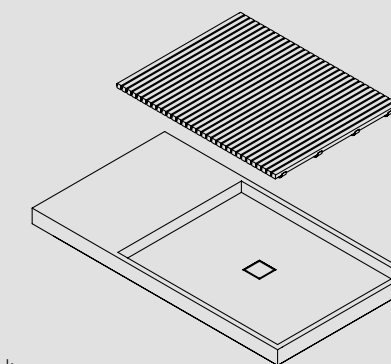
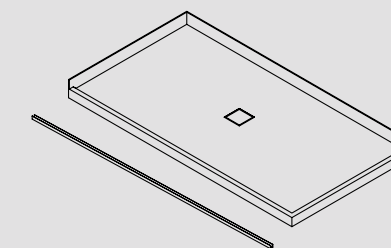
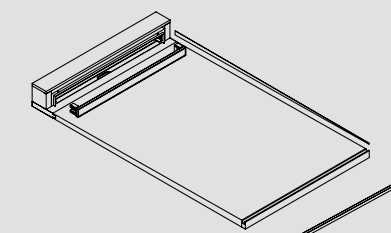


LINK

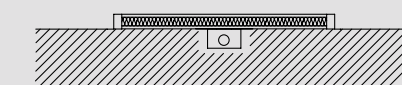


ACCESSORIABILITÀ FITTINGS

- Profilo pendenza / Sloped profile
- Rialzo pre-saldato lato contro muro / Pre-welded riser on the wall side
- Bordo filozero aggiuntivo pre-saldato / Pre-welded flush-riser
- Profilo per vetro integrato / Profile for integrated glass
- Asola per installazione rubinetteria / Cut-out for taps' installation
- Asola installazione / Installation cut-out
- Lavabo Integrato / Integrated washbasin
- Vano porta scopino / Toilet-brush holder niche



Modi di installazione / Additional processing



Appoggio / Floorstanding



Filopavimento / Floorflush

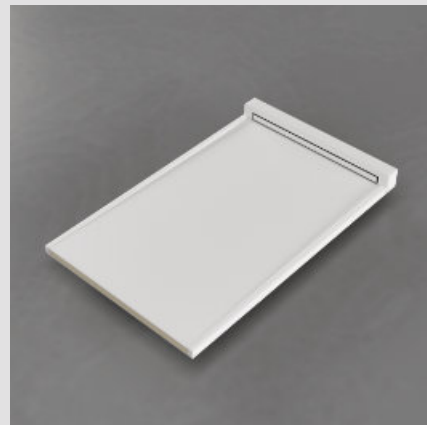
Filopavimento ribassato
Floorflush recessed



UNICO

Piatto doccia con scarico lineare integrato per installazioni a filo pavimento e in appoggio.

Shower tray with integrated linear drain suitable for floor flush and floorstanding installation.



INSIDE

Piatto doccia con scarico lineare a parete integrato per installazioni a filopavimento.

Shower tray with integrated wall linear drain suitable for floor flush and floorstanding installation.



BASIC

Piatto doccia con scarico centrale per installazioni a filopavimento e in appoggio.

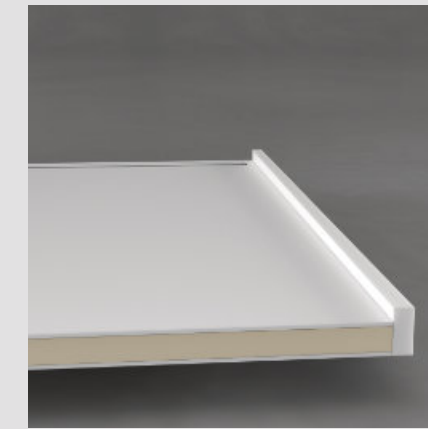
Shower tray with central drain suitable for floor flush and floorstanding installation.



LINK

Piatto doccia con scarico centrale e pedane laterali integrate per soluzioni simmetriche e asimmetriche. Installazione in appoggio.

Shower tray with central drain and integrated lateral steps leading to symmetric and asymmetric solutions Floorstanding installation.

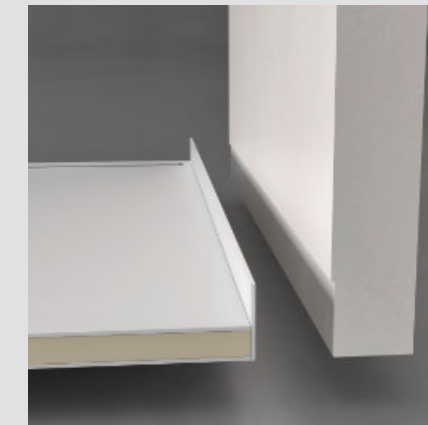


BORDO ZERO A / EDGE TYPE "A"

Bordo in TechnoPVC presaldato al piatto, spessore 30 mm. / 30 mm TechnoPVC edge welded to the plate

BORDO ALTO B / EDGE TYPE "B"

bordo in TechnoPVC, presaldato al piatto, spessore 30 mm. / Higher 30 mm edge type "B" in Technopvc welded to the shower tray.



PROFILO INTEGRATO per box doccia: in presenza di Bordo A - B è possibile integrare profili dedicati per box doccia.
INTEGRATED PROFILE for shower screen: profiles for the shower screen can be integrated in edges type A - B.

RIALZO LATI CONTROMURO: rialzo in TechnoPVC presaldato al piatto, spessore 6 mm (lati a muro).

RISERS AGAINST THE WALL: risers in TechnoPVC welded to the shower tray 6 mm thick (wall sides).

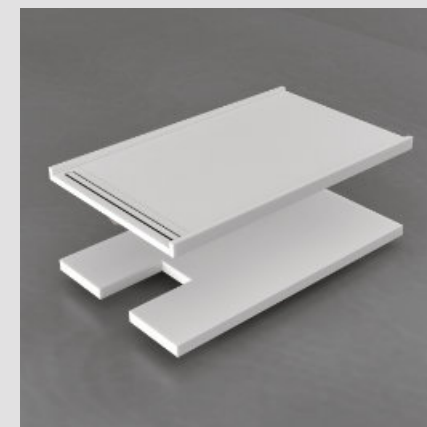


PROLUNGHE PER PANCA: Prolungamento in TechnoPVC lato canalina per integrazione panca a terra.

BENCH EXTENSIONS: Extensions in TechnoPVC on the drain side to integrate floorstanding benches

PROLUNGAMENTO in technopvc per integrazione con technowall.

EXTENSIONS in technopvc to integrate technowall.



SUPPORTO DI RIALZO EPS

Supporto in EPS per soluzioni fuori terra o particolari.

RISER IN EPS

Riser in EPS for floorstanding or bespoke solutions.