

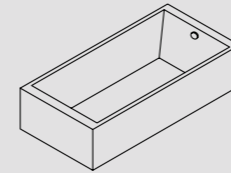
# VASCHE DA BAGNO / BATHTUBS



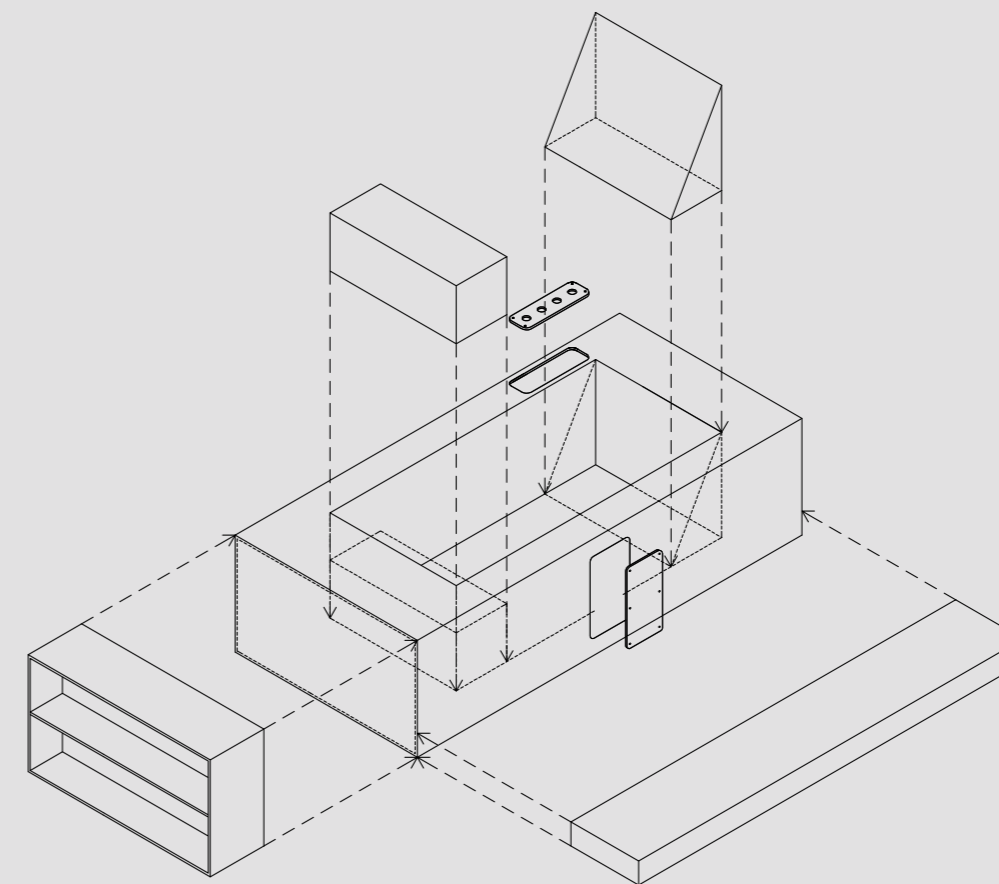
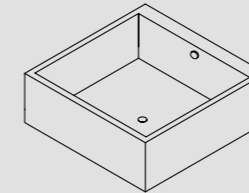
Le vasche Line sono la quintessenza di / Elements e si distinguono per la loro unicità tecnica e costruttiva. Sono realizzate in TechnoPVC saldato e sono completamente rivestibili sia nel volume interno che esternamente. La variabilità del bordo perimetrale, l'accessoriabilità dedicata e la personalizzazione dimensionale, consentono di realizzare soluzioni di assoluto senso estetico. Risultano essere particolarmente indicate per finiture a superficie continua e per i materiali ceramici e lapidei in lastra.

Line bathtubs are the quintessence of Elements and are distinguished by their technical and constructional uniqueness. They are made of welded Technopvc and can be fully clad both inside and outside. The different thickness of the perimeter edge, the dedicated fittings and the dimensional customization lead to solutions of absolute aesthetic sense. They are particularly suitable for continuous surface finishes and for ceramic and stone slab materials.

LINE \_ R



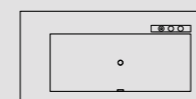
LINE \_ Q



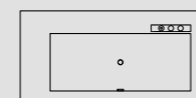
## ACCESSORIABILITÀ FITTINGS

- Schienale / Backrest
- Gradino interno / Inner step
- Asola per installazione rubinetteria e colonna di scarico / Cut-out for taps and drain's installation
- Gradino interno ed esterno / Internal and external step
- Vano a giorno / Open rack

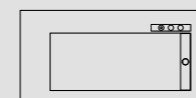
## TIPOLOGIE DI SCARICO



Scarico centrale  
Central drain



Scarico centrale fondo piano  
Central drain with flat base



Scarico lineare  
Linear drain

## INSTALLAZIONE - INSTALLATION



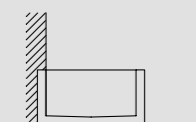
Appoggio  
Surface



Semincasso  
Half-recessed



Filopavimento  
Flush to wall



Filo muro  
Flush to wall



Parete  
Wall



Freestanding

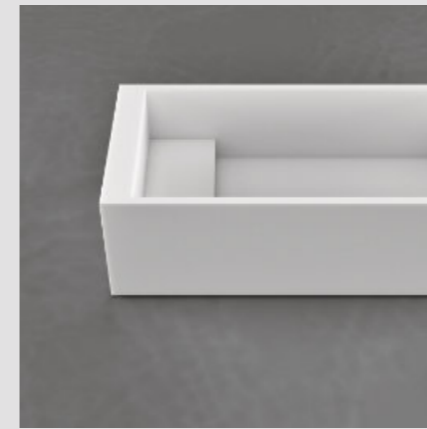


**TIPOLOGIE DI SCARICO**

Scarico lineare per rivestimento in gres ceramico e in marmo. Scarico centrale per rivestimento in marmo e resine-cementizie.

**DRAIN TYPOLOGIES**

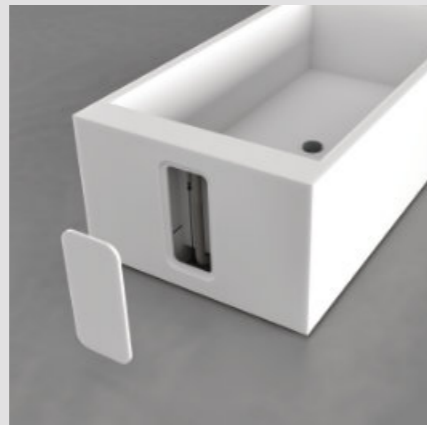
Linear drain for tiles and marble. Central drain for marble and resins.



**GRADINI INTERNI ED ESTERNI / INTERNAL AND EXTERNAL STEPS**

La vasca è personalizzabile con gradini interni ed esterni e con ribassi integrati al bacino con funzione di seduta.

The bathtub can be equipped with internal and external steps and with lowers integrated in the base with a seating function.

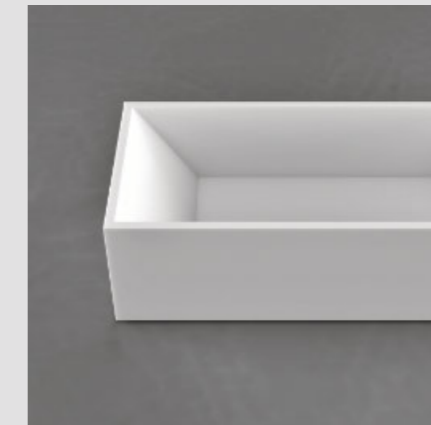
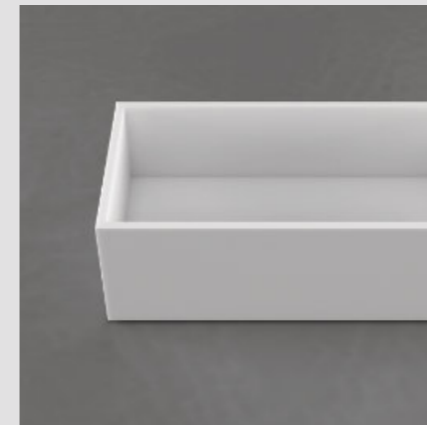


**ASOLA VANO TECNICO**

In corrispondenza dello scarico e della rubinetteria si trova un'asola removibile ed ispezionabile.

**TECHNICAL CUT-OUT**

A removable cut-out allows the inspection of the drain and of the taps.

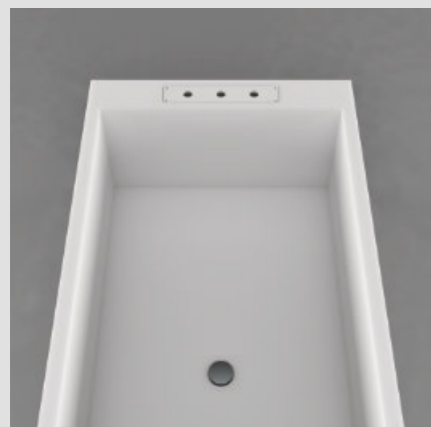


**SCHIENALI**

Le vasche LINE sono realizzate di serie con fianchi interni di 90°. Sono accessoribili con schienali inclinati di 25° su 1 o 2 lati e con schienali in legno.

**BACKREST**

The bathtubs LINE are produced with inner sides at 90°, but can be supplied also with sides sloped at 25° on one or two sides or with backrests in wood.

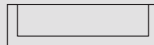
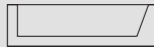
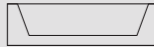


**CONTENITORI IN ACCOSTAMENTO  
COMBINED STORAGE UNITS**



**TIPOLOGIE SCHIENALI**

**BACKREST TYPES**

-  Schienale standard 90°  
Standard backrest 90°
-  Schienale singolo 25°  
Single backrest 25°
-  Schienale doppio 25°  
Double backrest 25°



**VASCHE ASIMMETRICHE**

Le vasche possono essere realizzate a misura con volumetrie simmetriche e asimmetriche.

**ASYMMETRIC BATHTUB**

The bathtubs can be customized and produced both symmetric and asymmetric.



**VANI A GIORNO INTEGRATI**

Per inserimento contenitori. Nel vano a giorno integrato in TechnoPVC è necessario inserire sempre un contenitore.

**OPEN RACKS**

For storage units. A storage unit needs to be included in the integrated open rack in Technopvc.